

MODERN GLASS DESIGN + FABRICATION

JEFFGOODMANSTUDIO



JEFFGOODMANSTUDIO

ABOUT US

Jeff Goodman Studio has attracted international recognition for the elegance and beauty of its modern blown glass vessels, large-scale installations and innovative architectural glass. Every piece created is one-of-a-kind and hand-made in our studio. Our clients include individuals, interior designers, corporations, building developers and architects.

THE WORK

Our work is colourful, fluid and organic and covers everything from lighting, sculptures, and hand-blown vessels to architectural accents and focal points. The studio's team of glass makers and designers continually push the limits of their art by producing elegant and gestural forms. Jeff Goodman classic pieces will forever be a staple of the studio while new designs and ideas continue to emerge.

An array of glass vessels are showcased at the studio, and pieces are also featured in select galleries across North America. Installations can be seen in the *Royal Ontario Museum*, Toronto's *Hazelton Residence and Hotel* and Toronto's luxury hotel, *The Ritz Carlton*.

THE STUDIO

When Jeff Goodman established the Studio in 1989, he created an environment where designers, artists and architects could collaborate and fully explore the unique possibilities of glass.

The Studio's constant desire to experiment and create continues to grow since Jeff's passing. The calm, innovative and productive atmosphere he fostered remains a home for the group of artists he mentored and inspired.

Jeff Goodman Studio
51 Cranfield Road
Toronto, Ontario Canada M4B 3H6
Phone: 416.532.8073

info@jeffgoodmanstudio.com
jeffgoodmanstudio.com

MODERN GLASS DESIGN + FABRICATION

JEFFGOODMANSTUDIO



Lima Vase

The Lima is our tallest hand blown glass vase. Every piece is one-of-a-kind. The frosted finish enhances the curved silhouette and gives a soft luminescence to the glass.

Available in over 20 colours. Please see our colour chart.
(Brilliant Gold, Neutral Grey and Strawberry shown here)

34" high to 60" high

\$3,750 to \$6,000

Jeff Goodman Studio
51 Cranfield Road
Toronto, Ontario Canada M4B 3H6
Phone: 416.532.8073

info@jeffgoodmanstudio.com
jeffgoodmanstudio.com

MODERN GLASS DESIGN + FABRICATION

JEFFGOODMANSTUDIO



Ovelle Vase

The Ovelle's organic folds are formed during the blowing process when the still molten glass is inflated and stretched. Each piece is one-of-a-kind. The frosted finish enhances the natural curves and gives a soft luminescence to the glass.

Available in 20 colours. Please see our colour chart.
(Saffron, Midnight Blue and Olive shown here)

12" high to 30" high

\$700 to \$3,950

Jeff Goodman Studio
51 Cranfield Road
Toronto, Ontario Canada M4B 3H6
Phone: 416.532.8073

info@jeffgoodmanstudio.com
jeffgoodmanstudio.com

MODERN GLASS DESIGN + FABRICATION

JEFFGOODMANSTUDIO



Veer Vase

The Veer is a slim, elegant and curvilinear vase. Each piece is hand-blown and one-of-a-kind. The frosted finish lends a soft luminescence to the glass.

Available in 20 colours. Please see our colour chart.
(Midnight Blue, Steel Blue and Cerulean shown here)

18" high to 45" high

\$1,320 to \$2,500

Jeff Goodman Studio
51 Cranfield Road
Toronto, Ontario Canada M4B 3H6
Phone: 416.532.8073

info@jeffgoodmanstudio.com
jeffgoodmanstudio.com

MODERN GLASS DESIGN + FABRICATION

JEFFGOODMANSTUDIO



Camber Vessel

The Camber is an elegant and undulating blown glass vessel. Each piece is one-of-a-kind. The polished and frosted surfaces accentuate the natural form while lending a soft luminescence to the glass.

Available in 20 colours. Please see our colour chart.

(Aurora shown here)

35" long to 60" long

\$2,600 to \$4,200

Jeff Goodman Studio
51 Cranfield Road
Toronto, Ontario Canada M4B 3H6
Phone: 416.532.8073

info@jeffgoodmanstudio.com
jeffgoodmanstudio.com

MODERN GLASS DESIGN + FABRICATION

JEFFGOODMANSTUDIO



Sagoma

Sagoma is the Italian word for outline or profile and this series is our chance to explore that in glass. Each piece is hand-made and the studio's trademark etched surface accentuates the rounded forms.

Designed by Blaise Campbell for
Jeff Goodman Studio

Available in 20 colours. Please see our colour chart.

(Whiskey, Saffron, Orange, Strawberry shown here)

12" high to 24" high

\$800

Jeff Goodman Studio
51 Cranfield Road
Toronto, Ontario Canada M4B 3H6
Phone: 416.532.8073

info@jeffgoodmanstudio.com
jeffgoodmanstudio.com

MODERN GLASS DESIGN + FABRICATION

JEFFGOODMANSTUDIO



Ovoid Scribe Vase

The Ovoid Scribe is a hand-blown one-of-a-kind sculpture. This simple yet unique form is complimented with Jeff's own automatist inspired drawings etched onto the surface. The frosted finish gives a glowing translucency to the glass.

Available in 20 colours. Please see our colour chart.
(Olive with Black Scribe shown here)

12" wide to 20" wide

\$2,200 to \$3,800

Jeff Goodman Studio
51 Cranfield Road
Toronto, Ontario Canada M4B 3H6
Phone: 416.532.8073

info@jeffgoodmanstudio.com
jeffgoodmanstudio.com

MODERN GLASS DESIGN + FABRICATION

JEFFGOODMANSTUDIO



Scribe Vase

The Scribe Vase has natural folds that are created during the blowing process. Each piece is one-of-a-kind. The frosted finish enhances the natural curves and luminescence of the glass. The overall form is complimented with Jeff's own automatist inspired drawings etched onto the surface.

Available in 20 colours. Please see our colour chart.
(Emerald with Black Scribe shown here)

16"high to 38"high

\$1,400 to \$4,400

Jeff Goodman Studio
51 Cranfield Road
Toronto, Ontario Canada M4B 3H6
Phone: 416.532.8073

info@jeffgoodmanstudio.com
jeffgoodmanstudio.com

MODERN GLASS DESIGN + FABRICATION

JEFFGOODMANSTUDIO



Scribe Bowl

The Scribe Bowl is an elegant, simple oval shaped bowl. Each piece is hand-formed and one-of-a-kind. The exterior or interior of the bowl is etched with Jeff's own automatist inspired drawings.

Available in 20 colours. Please see our colour chart.
(Brilliant Gold and Black Lustre Scribes shown here)

10" wide to 20" wide

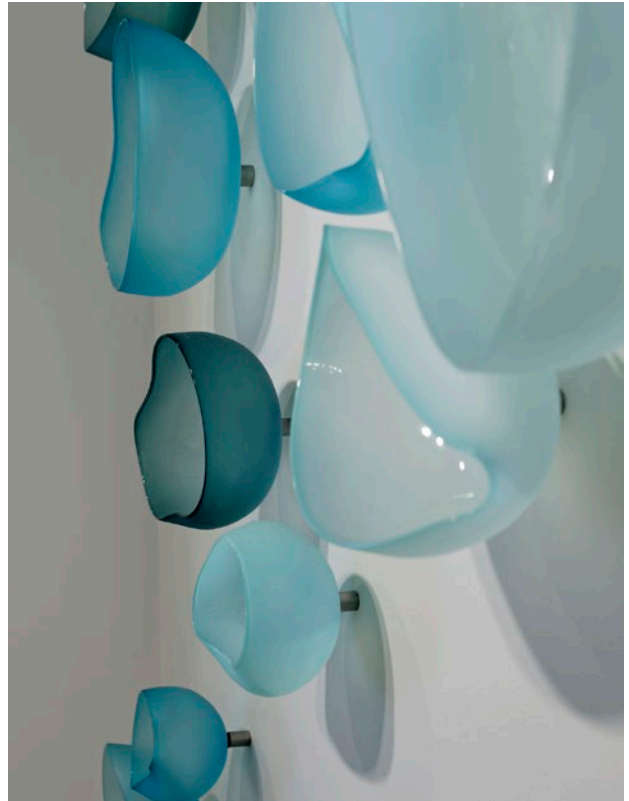
\$1,900 to \$3,600

Jeff Goodman Studio
51 Cranfield Road
Toronto, Ontario Canada M4B 3H6
Phone: 416.532.8073

info@jeffgoodmanstudio.com
jeffgoodmanstudio.com

MODERN GLASS DESIGN + FABRICATION

JEFFGOODMANSTUDIO



Topography

The Topography wall installation is composed of hand-blown, one-of-a-kind organic bowl forms. The combination of shiny interior and frosted exterior surfaces emphasize the curvilinear lines of the forms and create a gentle contrast in colour.

Customizable composition, size and colour.
Each piece is sold individually.

Available in 20 colours. Please see our colour chart.
(Copper Blue, Sea Green and Celadon shown here)

Small	6" diameter to 8" diameter	\$350
Medium	9" diameter to 12" diameter	\$450
Large	13" diameter to 14" diameter	\$550

Jeff Goodman Studio
51 Cranfield Road
Toronto, Ontario Canada M4B 3H6
Phone: 416.532.8073

info@jeffgoodmanstudio.com
jeffgoodmanstudio.com

MODERN GLASS DESIGN + FABRICATION

JEFFGOODMANSTUDIO



Lace Tumbler

Hand blown glass tumbler with etched lace detail.
Designs available: Lace, Forest, Tree, Burlap.
Designed by Nick Chase for Jeff Goodman Studio

Available in clear glass only

2.25" high X 3.5" diameter

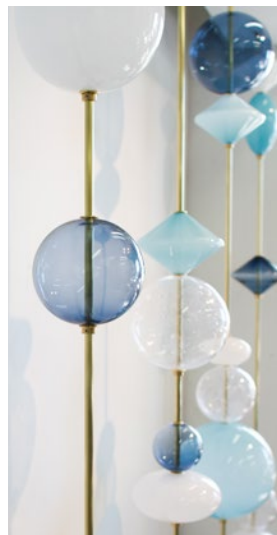
\$60 each

Jeff Goodman Studio
51 Cranfield Road
Toronto, Ontario Canada M4B 3H6
Phone: 416.532.8073

info@jeffgoodmanstudio.com
jeffgoodmanstudio.com

MODERN GLASS DESIGN + FABRICATION

JEFFGOODMANSTUDIO



Abacus wall divider

The Abacus Screen was developed by Jeff Goodman Studio as a product for architects and designers to merge the beauty of glass into the architecture of a space. The Abacus is a modular, customizable screen that brings the colour and materiality of blown glass to life in any residential or commercial space.

The Abacus is available in various metal finishes. It's designed to have an exposed frame or can be frameless and integrated into the built environment. The screen can modulate light, divide a space, create visual privacy or simply adorn the space with suspended 'jewels'. It's both art and design, and creates a visual signature within any space.

dimension: 54"W X 96"H X 11"D \$14,000 each

customizable colours and sizes

Jeff Goodman Studio
51 Cranfield Road Toronto, Ontario Canada M4B 3H6
Phone: 416.532.8073
info@jeffgoodmanstudio.com jeffgoodmanstudio.com

MODERN GLASS DESIGN + FABRICATION

JEFFGOODMANSTUDIO



Leaf Bowl

The Leaf Bowl is shallow and oval by design. Single rods of glass are fused together and melted into the final shape. The frosted finish compliments the glass with a soft glow.

Please contact us for available colours.

[New Green, Brilliant Gold, and Pine shown here]

approximately 21"W x 29"L x 6"H

\$3,960

Jeff Goodman Studio
51 Cranfield Road
Toronto, Ontario Canada M4B 3H6
Phone: 416.532.8073

info@jeffgoodmanstudio.com
jeffgoodmanstudio.com

MODERN GLASS DESIGN + FABRICATION

JEFFGOODMANSTUDIO



Bioa Vase

The Bioa Vase is a frosted cylindrical form with a driftwood inspired texture etched onto the surface. Each piece is hand-blown and one-of-a-kind.

Designed by Nick Chase for Jeff Goodman Studio

Available in 20 colours. Please see our colour chart.

(Neutral Grey, Steel Blue, Brilliant Gold, Steel Grey, Sargasso and Tea shown here)

Small	10"high X 3" diameter	\$400
Medium	13"high X 3.25" diameter	\$500
Large	15"high X 3.5" diameter	\$600

Jeff Goodman Studio
51 Cranfield Road
Toronto, Ontario Canada M4B 3H6
Phone: 416.532.8073

info@jeffgoodmanstudio.com
jeffgoodmanstudio.com

MODERN GLASS DESIGN + FABRICATION

JEFFGOODMANSTUDIO



Cascade Chandelier

The Cascade Chandelier is composed of multiple hand-blown glass forms strung together with stainless steel strands. Each grouping is unique and can be designed to suit any location. The combination of shiny and frosted surfaces shows off the individual pieces and allows the Chandelier to glow under all light conditions.

Customizable overall form, size and colors.

(left) 138" H X 60" W X 60" L

Over 800 pieces of hand blown glass discs hanging on stainless steel strands.

Prices available upon request.

Jeff Goodman Studio
51 Cranfield Road
Toronto, Ontario Canada M4B 3H6
Phone: 416.532.8073

info@jeffgoodmanstudio.com
jeffgoodmanstudio.com

MODERN GLASS DESIGN + FABRICATION

JEFFGOODMANSTUDIO



Enso Chandelier

Located at the Ritz-Carlton Spa in Toronto Ontario, this glass installation consists of 259 hand blown glass discs suspended below a skylight. 2.75m X 12m. The glass is coloured in calming, neutral, translucent tones and every disc is gently curved to create subtle movement while acting as a light diffusing screen from the sun above.

Customizable overall form, size and colors.

Jeff Goodman Studio
51 Cranfield Rd Toronto Canada M4B 3H6
Phone: 416.532.8073
info@jeffgoodmanstudio.com
jeffgoodmanstudio.com

MODERN GLASS DESIGN + FABRICATION

JEFFGOODMANSTUDIO



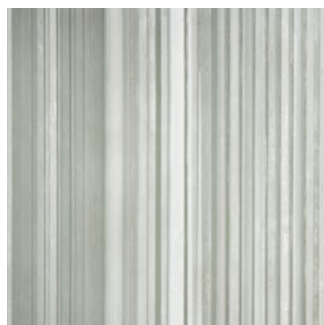
River Rock



Lattice



Strata



Linear

Temple Glass

Temple Glass luxurious glass panels are meticulously crafted and polished by hand in our Toronto studio. Large panels are created by kiln-forming borosilicate glass into unique patterns. The result is a highly durable, thick, milky-white, translucent glass that has an organic, luminous quality. These glass panels can be used in a wide range of applications, from wall dividers to table tops.

White glass only. Custom orders.

standard dimension: 46" X 72"

thickness: 1" to 2" thick

* Due to the hand made nature of this glass the thickness has a variance of +/- 3mm.

Jeff Goodman Studio
51 Cranfield Road
Toronto, Ontario Canada M4B 3H6
Phone: 416.532.8073

info@jeffgoodmanstudio.com
jeffgoodmanstudio.com

MODERN GLASS DESIGN + FABRICATION

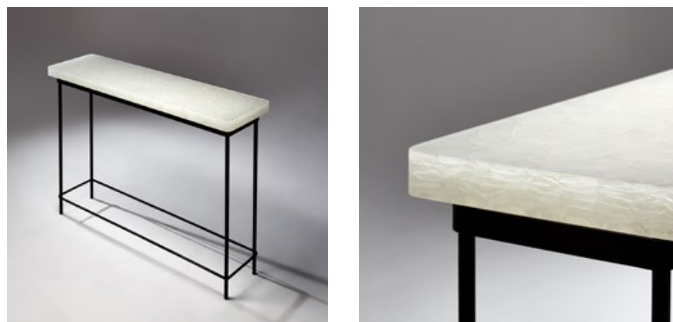
JEFFGOODMANSTUDIO



Rothwell Table



Sticks Tables



Stilts Console with Strata Pattern Temple Glass.

Tables made with Temple Glass

Temple Glass luxurious glass panels are meticulously crafted and polished by hand in our Toronto studio. The panels are created by kiln-forming borosilicate glass into unique patterns. The result is a highly durable, thick, milky-white, translucent glass that has an organic, luminous quality. These glass panels can be used in a wide range of applications, from wall dividers to table tops.

White glass only. Custom orders.

standard dimension: 46" X 72" thickness: 1" to 2"

* Due to the hand made nature of this glass the thickness has a variance of +/- 3mm.

Jeff Goodman Studio

51 Cranfield Road Toronto, Ontario Canada M4B 3H6

Phone: 416.532.8073

info@jeffgoodmanstudio.com

jeffgoodmanstudio.com

MODERN GLASS DESIGN + FABRICATION

JEFFGOODMANSTUDIO



Chroma Grey



Chroma Blue

Chroma Glass

Chroma panels consist of a number of glass rods placed into an open mold, which is then heated in a kiln to melt the rods into one panel. All of the rods we use are hand colored and stretched to provide us with an infinite array of colors and patterns.

Available in 20 colours. Please see our colour chart.

standard dimension: 42" X 66"

thickness: 5/8" to 2" thick

* Due to the hand made nature of this glass the thickness has a variance of +/- 3mm.



Jeff Goodman Studio
51 Cranfield Road
Toronto, Ontario Canada M4B 3H6
Phone: 416.532.8073

info@jeffgoodmanstudio.com
jeffgoodmanstudio.com

MODERN GLASS DESIGN + FABRICATION

JEFFGOODMANSTUDIO



strawberry



ferrari



mandarin



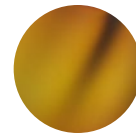
saffron



brilliant gold



orange



gold brown



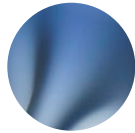
copper blue



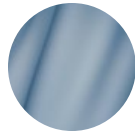
light blue



cerulean



steel blue



pigeon blue



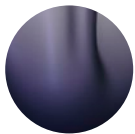
neutral grey



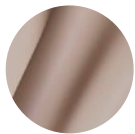
sargasso



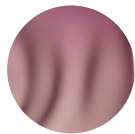
black lustre



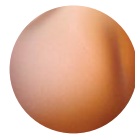
midnight



aubergine



amethyst



aurora



iris gold



whiskey



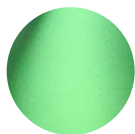
opal white



pigeon grey



olive



forest



sea green



emerald



steel grey

Colour Chart

Colours may vary based on the lighting, thickness, density, surface finish and form of each vessel.

Custom colours available.

Jeff Goodman Studio
51 Cranfield Road
Toronto, Ontario M4B 3H6
Canada
Phone: 416.532.8073

info@jeffgoodmanstudio.com
jeffgoodmanstudio.com